



# Laser marking Machine



# Pulsed-Fiber Laser



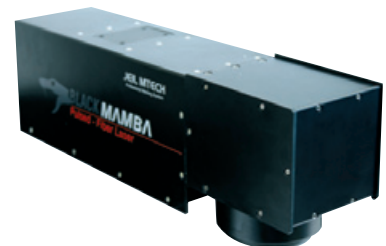
## Specification of Fiber Laser

- Compact size
- Air cooling type
- No consumable goods needed  
(Filters, Lamps, Flow Tubes, Diode Packs)
- 40% energy saving  
(Nd:20times beneficial as compared with ND:YAG)
- Min maintenance is more than 100,000 hrs.

## Typical Specifications

Model	20RM	25RM
Average power	20W	25W
Mode of operation	RM only support PULSED	
Wave length	1064 ± 5nm	
Pulse width	100 nsec	
Operating temperature range	Temperature : 0~45℃ / Humidity 5~95%	
Input power Single	Single-phase 220V/8A	
Interface	Ethernet, RS-232, I/O	
Cooling	Air cooling	
Size	505(W) × 483(L) × 177(H)mm	
Weight	25kg	
Optional	Red pointer, Marking during Transferring	
P.C	G620 2.6GHZ, HDD 500G × 2, 4G-Ram, Windows 7 32bit	
Cable length	2 Meter	3 Meter

## Scan Head



Focal length (f)	163mm	254mm
Working length (L)	182mm	306mm
Marking window	107×107mm	160×160mm
Weight	2kg	2kg
Size	118(W) × 484(L) × 142(H)mm	118(W) × 484(L) × 142(H)mm

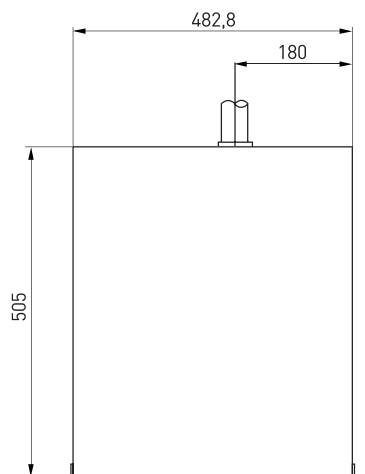
## Dustproof rack cabinet



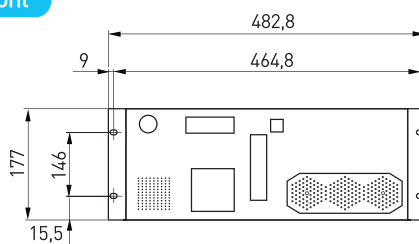
### Specification of dustproof rack cabinet.

- Installation of air-conditioner duct for the best cooling effect
- Full anti-vibration design to reinforce for the stability.
- Installation of LED lighting for maintenance
- Prevent indoor pollution by separated keyboard room.

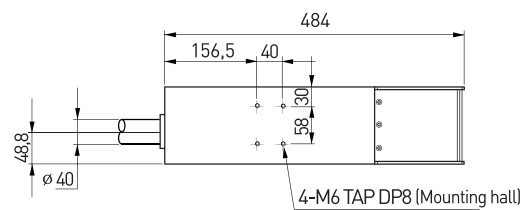
Upper



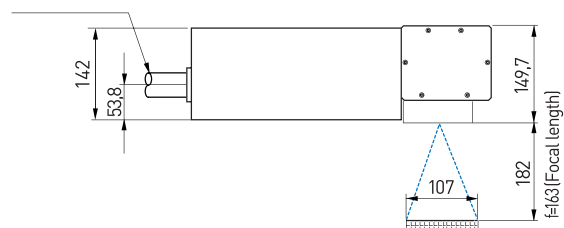
Front



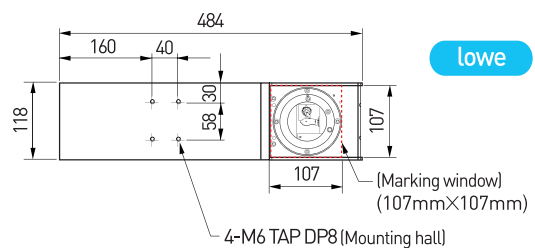
Upper



Side



lowe





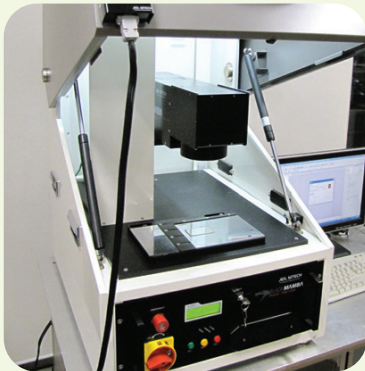
## SAMPLE / Vehicle part&Tools





## Table top marking equipment

\*Massive equipment



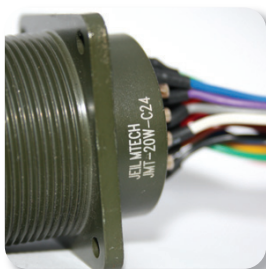
\*External switch



### Specification of table top marking equipment

- User friendly Z-Axis remote controller
- Installation of safety window to be able to see the marking process.
- Installation of LED lighting and fan for workers convenience.

### SAMPLE / Electrical and electronics parts



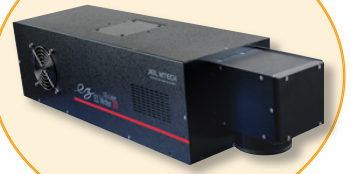
## CO<sub>2</sub> Laser EZ Writer10

*ez* CO<sub>2</sub> Laser  
EZ Writer 10



### Specification of CO<sub>2</sub> Laser EZ Writer10

- Clean work environment (No ink needed)
- Eternal marking
- Possible to do install any direction
- Possible to do external marking on micro-moisture
- Min Maintenance is more than 45,000 hrs.



### Specification of EZ Writer CO<sub>2</sub> Laser Marking

#### Possible to do fast marking to Non-Metal material by laser beam.

Marking speed of CO<sub>2</sub> laser marking machine is entirely different from existed Ink-jet, Electric chemical and dot pin marking machine and many font and logo can be marked through S/W. Also no physical load by non-contact marking.

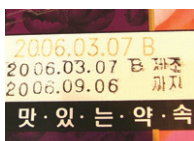
#### Low failure and easy to maintenance than Ink-Jet marking M/C.

Released from blockage of the nozzle and ink leak which happen frequently to Ink-Jet marking machine. Easy to maintenance. Good quality of marking possible because laser source will be recharged after 45,000 hrs.

#### Easy to use by easy way of working type of GUI.

As the menu configuration of GUI type using P.C, every can mark to the products easily and easy to user approach through various application menu..

### Application pics of marking



paper



wood



plastic



Vinyl resin

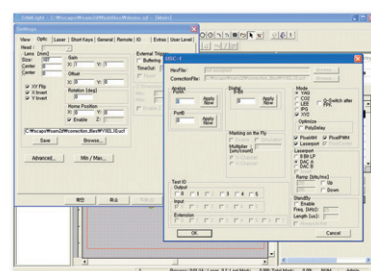
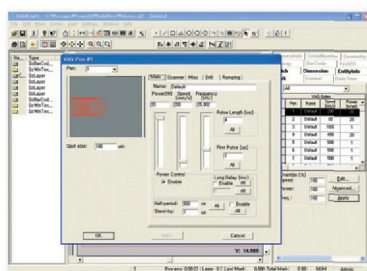
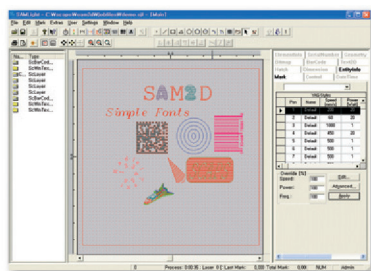


printed tare



glass

## Application software



- TrueType fonts marking
- Single point and drill objects array
- Marking on all property is designated by direct encoding type..
- The number of opened JOBs can be converted by one mouse click.
- In order to arrange easily for Background template and mark, it will be displayed on the screen.
- Variety graphics : HPGL, WMF, DXF, EPS, JPEG, GIF, PCX, BITMAP
- Shaded graphics : Photo hyphen & Grayscale image marking.

\*Barcode marking



\*Logo marking



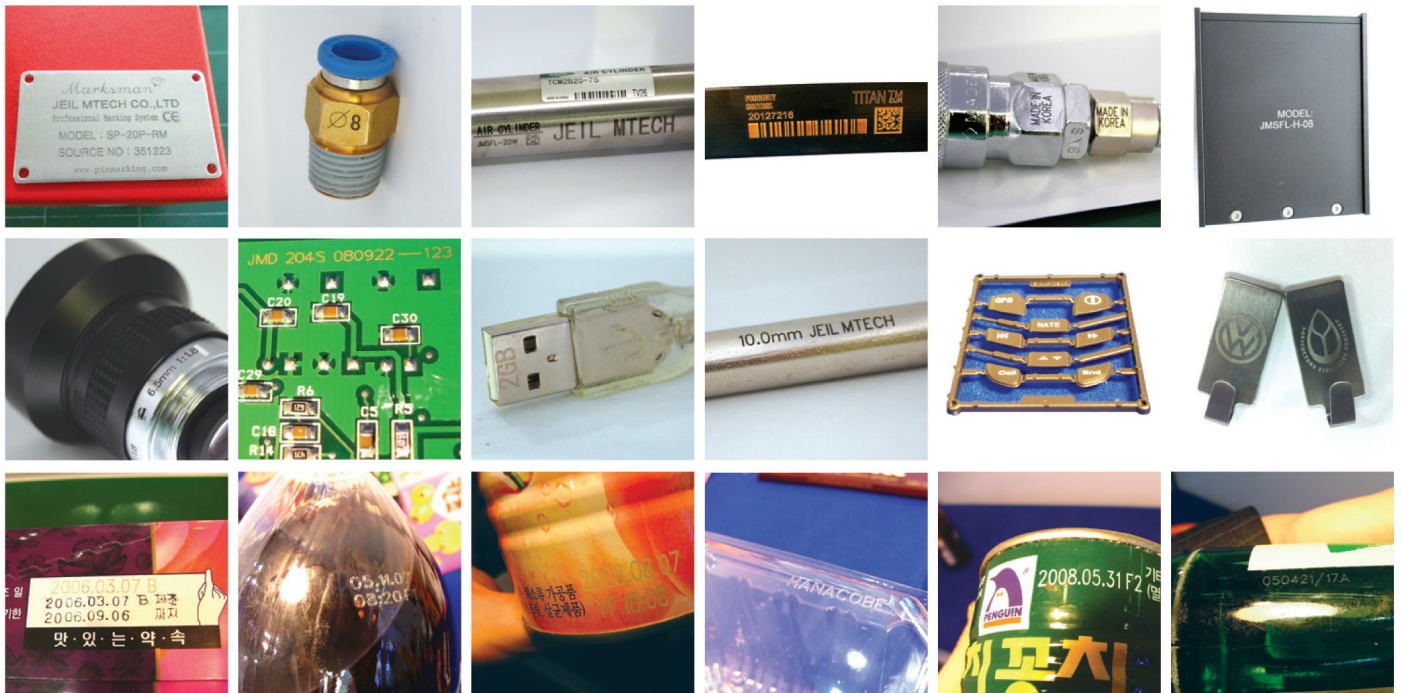
\*Circular marking



## Typical Specifications

Division	UL-10	UL-30
Laser Type	Sealed type RF Driven CO2 Laser	
Laser wavelength	10.57~10.63um	
Laser power	10W	30W
Speed(cha/sec)	400CPS	600CPS
Marking Window	110 x 110mm	
Focal length	152mm	
User interface	Letter form Ture type font, Multi-language support	
Laser Head size	718(W) x 170(D) x 128(H)mm	700(W) x 185(D) x 165(H)mm
Laser Head weight	15KG	19KG
CPU size	430(W) x 525(D) x 85(H)mm	
CPU weight	11KG	
Input signal	STRAT, RESET, STOP	
Output signal	READY, WORKING, ALARM	
Speed sensing of work piece	SHAFT ENCODER Fixed sensor detect	
Control method	RS-232, ETHERNET	
PC	G620 2.6GHZ, HDD 500G x 1, 4G-Ram, Windows 7 32bit	
Electric	Single-phase 220V 8A	
Operating temperature	15°C ~ 40°C	
Operating Humidity	5 ~ 95%	
Option	Red pointer, ENCODER (on THE FLY)	





**JEIL MTECH** [www.pinmarking.com](http://www.pinmarking.com)

#909, SK@Technopark Mega-Dong, 190-1,  
Sangdaewon-Dong, Joongwon-Gu,  
Seongnam-Si, Gyeonggi-Do, S.KOREA(462-120)  
TEL +82-31-776-0803 FAX +82-31-776-0807  
e-mail isaac@pinmarking.com,  
tech@pinmarking.com

Authorized distributor